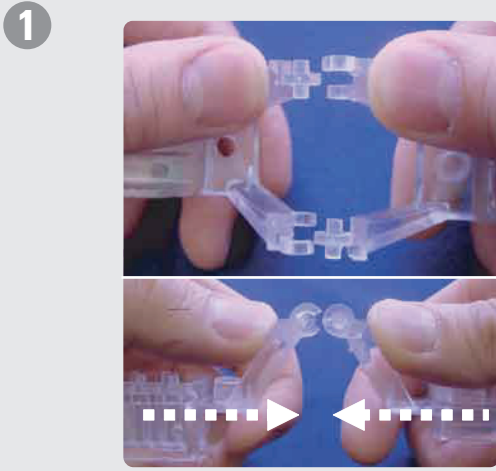




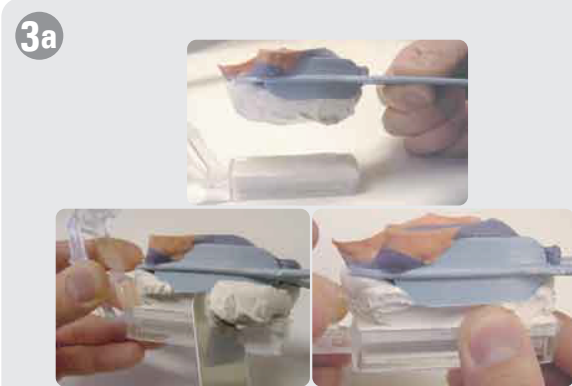
Artimax articulator is composed of an upper tray and a lower tray. The prepped side of the impression always faces the lower tray.



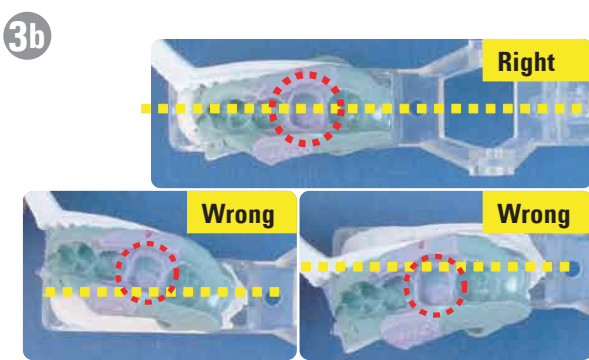
1 Hold the trays parallel to one another and snap the hinges gently into place **with your thumbs**, one hinge at a time.



2 Using scissors or a knife, trim the impression of both the prepped side and the opposing side, so that the impression fits between the trays.



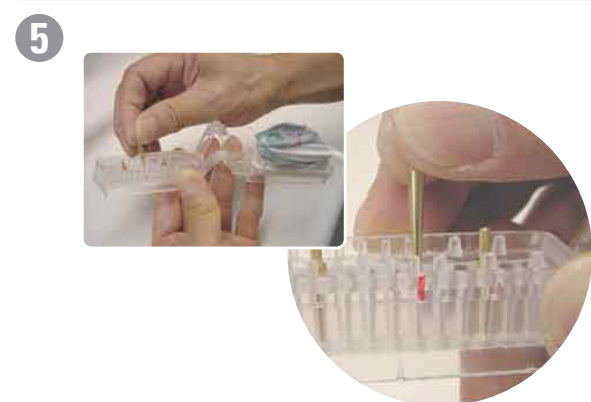
3a
1) Start with the opposing side first. Pour stone on the opposing side of the impression and on the upper tray. Invert the impression on the upper tray.
2) Before the stone sets, clean away excess stone with a spatula. **3)** Wipe off the sides of the tray with finger tips for a clean look. (This will substantially reduce your grinding time later on).



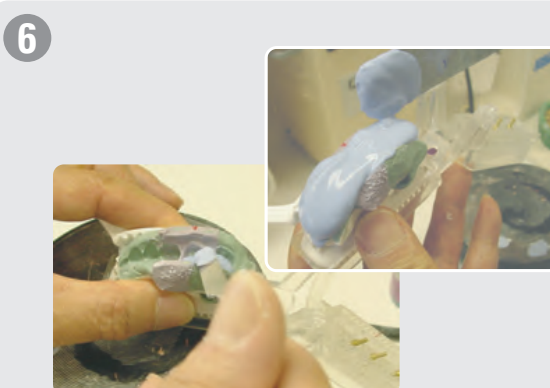
3b
 When inverting the impression onto the upper tray, **place it so that the center of the prepped tooth** (red dotted line) **is aligned with the center of the lower tray** (shown with yellow dotted line)



4
 To correctly position the metal pin for the working die, mark the center of the prepped tooth on the impression and then on the working tray with a marker.



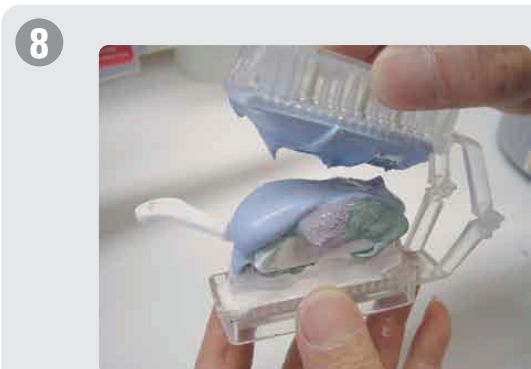
5
 Insert the metal pins. Use one pin for the prepped tooth and one pin for each adjacent tooth.



6
 While using the vibrator, pour the stone on the prepped side of the impression.



7
 The best way to put the die stone on the working tray is to cover the pin holes first, **without vibration**. Then, dab the stone gently in small motion to spread evenly.



8
 Invert the lower tray along the pivotal hinge over the impression filled with die stone.



9
 Before the stone sets, clean away excess stone with a spatula and wipe off the sides of the tray with finger tips for a clean look. This will also substantially reduce your model grinding/drying time.



10
 Now, with a little practice, you too can create this professional looking die in less than 5 minutes.